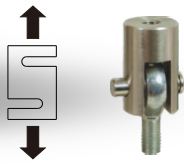
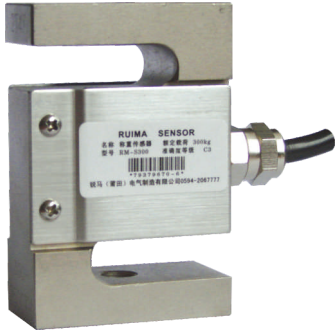


# RM-S1 S型拉压传感器



## 外型尺寸 Dimensions

量程(kg)	B(mm)	H(mm)	W(mm)	T
50 100 200	50.8	77	18.5	M10X1
300	50.8	77	24.5	M10X1
500	50.8	77	24.5	M12X1
1000	50.8	77	36	M12X1
2000	70	86	45	M16X1.5
3000	80	100	50	M18X1.5
5000	92	130	58	M20X2

## 技术参数 Technical Parameter

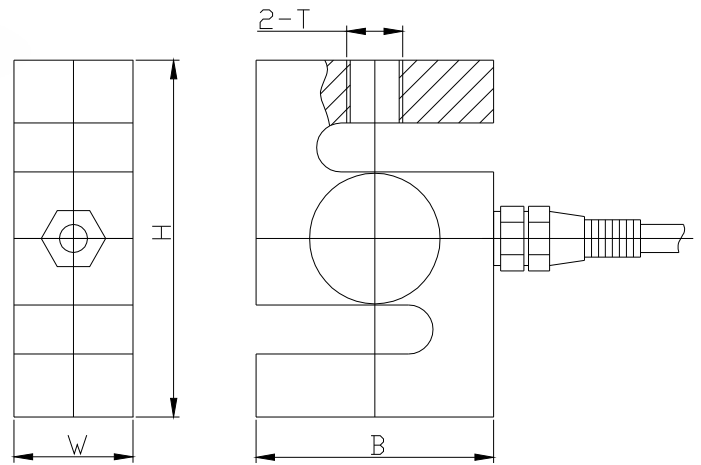
载荷特性 Load Speciality	
额定载荷 Maximum Capacity	50kg ~ 5000kg
准确度等级 Accuracy Class	C3
灵敏度 Sensitivity	2.0 ± 0.002% mv/v
非线性(含滞后) Nonlinearity(Included Hysteresis)	± 0.02% F.S
重复性 Repeatability	± 0.02% F.S
蠕变(30分钟) Creep(30 Min)	± 0.02% F.S
温度特性 Temperature Speciality	
温度对零点影响 Temperature Effect On Zero Balance	± 0.02% F.S/10℃
温度对灵敏度影响 Temperature Effect On Sensitivity	± 0.02% F.S/10℃
工作温度 Service Temperature Range	-30 ~ +70℃
温度补偿范围 Compensated Temperature Range	-20 ~ +60℃
机械特性 Machine Speciality	
安全承载 Safe Load Limit	150% F.S
极限承载 Lateral Load Limit	200% F.S
破坏载荷 Breaking Load	300% F.S

## 产品特性 Product Characteristic

本产品结构紧凑,综合精度高,稳定性好;采用优质合金钢;适用于吊钩秤、配料称重控制,建机等领域.可选配连接件.可替代托利多公司的TSB型传感器.

The structure of product is compact, high accuracy, good stability and made of best alloy steel. This product is suitable for hook balance, burden weighing system, building machinery fields and so on. This type can act well like TSB type of TOLEDO Load Cell.

## 外形图 Appearance Picture



## 电气特性 Electric Speciality

输入电阻 Input Resistance	380 ± 5 Ω
输出电阻 Output Resistance	350 ± 1 Ω
绝缘电阻 Insulation Resistance	≥ 5000M Ω
零点平衡 Zero Balance	± 1% F.S
推荐工作电压 Recommended Excitation	10V(DC)
最大工作电压 Maximum Excitation	12V DC
其它 Else	
材质 Construction	合金钢或不锈钢 Alloy steel or stainless steel
电缆长度 Cable Length	5M
密封等级 Protection Class	IP67
引用标准 Citation	GB/T7551-2008 OIMLR60
接线方式(6线制) Mode Of Connection	激励+绿 Excitation+:Green 激励-黑 Excitation-:Black 信号+白 Signal+:White 信号-红 Signal-:Red 反馈+黄 Sense+: Yellow 反馈-蓝 Sense-: Blue