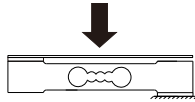
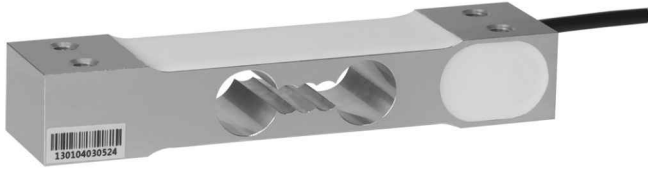


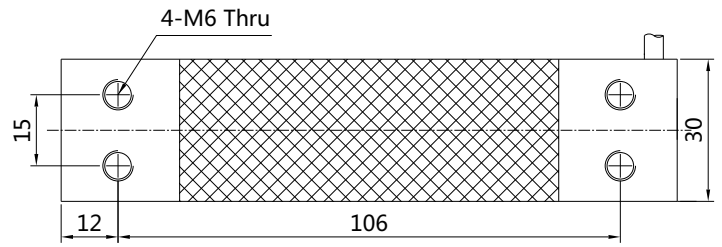
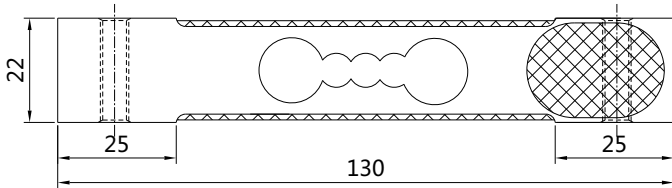
RM-FL1 铝合金传感器



产品特性 Product Characteristic

- 铝合金结构
Aluminum alloy.
- 高精度，OIML R60 C3-C5 认证
High accuracy, OIML R60 approved.
- 广泛用于计价秤，计数秤，计重秤等
Mainly used for price computing scale, counting scales, weighing scales etc.
- 最大秤盘尺寸250x350mm
Max. platform size: 250x350mm.

外形图 Appearance Picture



技术参数 Technical Parameter

载荷特性 Load Speciality	
额定载荷 Maximum Capacity	3,6,10,15,20,30,40,50 (kg)
准确度等级 Accuracy Class	C*
灵敏度 Sensitivity	2.0 ± 10% mv/v
非线性(含滞后) Nonlinearity(Included Hysteresis)	± 0.015% F.S
重复性 Repeatability	± 0.02% F.S
蠕变(30分钟) Creep(30 Min)	± 0.02% F.S
温度特性 Temperature Speciality	
温度对零点影响 Temperature Effect On Zero Balance	± 0.02% F.S/10℃
温度对灵敏度影响 Temperature Effect On Sensitivity	± 0.02% F.S/10℃
工作温度 Service Temperature Range	-30 ~ +70℃
温度补偿范围 Compensated Temperature Range	-20 ~ +60℃
机械特性 Machine Speciality	
安全承载 Safe Load Limit	150% F.S
极限承载 Lateral Load Limit	200% F.S

破坏载荷 Breaking Load	300% F.S
电气特性 Electric Speciality	
输入电阻 Input Resistance	405 ± 10Ω
输出电阻 Output Resistance	350 ± 3Ω
绝缘电阻 Insulation Resistance	≥ 5000MΩ
零点平衡 Zero Balance	± 1% F.S
推荐工作电压 Recommended Excitation	10V(DC)
最大工作电压 Maximum Excitation	15V DC
其它 Else	
材质 Construction	铝合金 Aluminum
电缆长度 Cable Length	∅4mm×0.4m *
密封等级 Protection Class	Ip65
引用标准 Citation	GB/T7551-2008 OIMLR60
接线方式 Mode Of Connection	输入 + 红 Input+:Red 输入 - 黑 Input-:Black 输出 + 绿 Output+:Green 输出 - 白 Output-:White