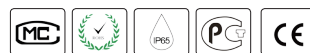
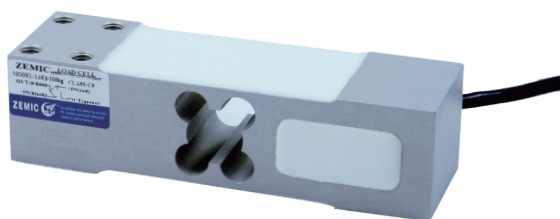




L6E3

- Aluminium-alloy IP65 single point load cell.
- Colourless anodized
- Suitable for pricing scales, bench scales, etc
- Maximum platform size: 450 x 450 mm



 Certificate no. 11-062
 test certificate no. TC7836 Revision 1
 C of C no R60/2000-NL1-10.34

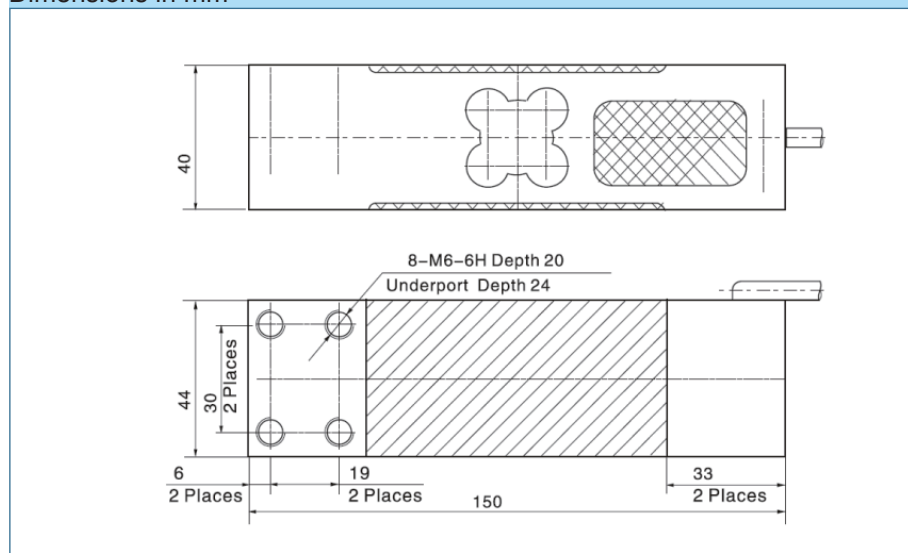
Available models

Capacity	Accuracy	Full article description
50 kg	C3/C4	L6E3-C3/C4-50kg-2G
100 kg	C3/C4	L6E3-C3/C4-100kg-2G
150 kg	C3/C4	L6E3-C3/C4-150kg-2G
200 kg	C3/C4	L6E3-C3/C4-200kg-2G
250 kg	C3/C4	L6E3-C3/C4-250kg-2G
300 kg	C3/C4/C5	L6E3-C3/C4/C5-300kg-2G
400 kg	C3/C4/C5	L6E3-C3/C4/C5-400kg-2G
500 kg	C3/C4/C5	L6E3-C3/C4/C5-500kg-2G

Specification

Accuracy class		OIML R60 C3	OIML R60 C4	OIML R60 C5
Output sensitivity (= FS)	mV/V	2.0 ± 0.2		
Maximum capacity (E _{max})	kg	50, 100, 150, 200, 250, 300, 400, 500	300, 400, 500	
Maximum number of load cell intervals (nLC)		3000	4000	5000
Ratio of minimum LC verification interval Y = E _{max} / V _{min}		10000	15000	20000
Combined error	%FS	± 0.0200	± 0.015	± 0.01
Minimum dead load	of E _{max}	0%		
Safe overload	of E _{max}	120 %		
Ultimate overload	of E _{max}	150 %		
Zero balance	%FS	± 2.0		
Excitation, recommended voltage	V	5 ~ 12(DC)		
Excitation maximum	V	18		
Input resistance	Ω	406 ± 6		
Output resistance	Ω	350 ± 3		
Insulation resistance	MΩ	≥ 5000 (50VDC)		
Compensated temperature	°C	-10 ~ +40		
Operating temperature	°C	-35 ~ +65		
Storage temperature	°C	-40 ~ +70		
Element material		Aluminium		
Recommended torque on fixation	N.m	M6:10		
Ingress protection (according to EN 60529)		IP65		

Dimensions in mm



Wiring

